



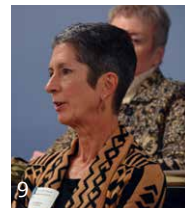
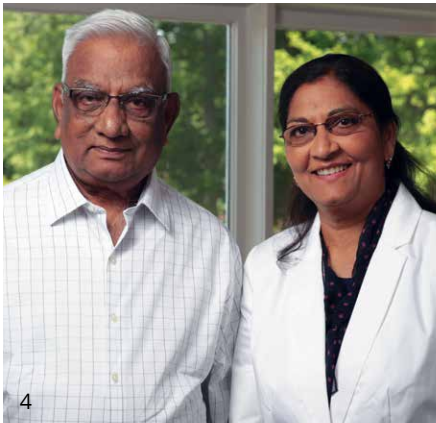
CATTARAUGUS REGION
COMMUNITY FOUNDATION

GROWINGGOOD.



2016 Annual Report

Capture. Share. Inspire.



Inside Cover

1. Dan Strauch and Steve Foster, CRCF board members, and Audra Stevens, past board member.
2. Olean Food Pantry's Christie Brook and Maureen Curry at the 2016 Friends of the Foundation Luncheon.
3. 2016 Friends of the Foundation, James and Carol Stitt.
4. CRCF board member and scholarship committee chair Dr. Yogini Kothari and her brother, JC Patel.
5. CRCF intern Stephanie Dolliver at a Canvas 4 a Cure event.
6. Wendy Brand, CRCF board president, at Nonprofit Networking Day.
7. Father Greg Dobson and Father Leo Gallina with a scholarship recipient and family at the 2016 Friends of the Foundation Luncheon.
8. CRCF executive director Karen Niemic Buchheit and CRCF board president Wendy Brand with departing board members: Bob Simon, Barbara Chew, Dr. Naheed Hilal, Audra Stevens and Skip Wilday.
9. CRCF board member Lucy Benson at a CRCF-hosted board networking event.
10. CRCF board member Dennis Casey at Nonprofit Networking Day.
11. The new CRCF office at 301 North Union St.

Design: Brand-Blazer
Photography: Danny Bush
and Kirk Windus



Inspiration: Growing Good

Stories and images have power. They stir the imagination, entertain, inform and inspire. This annual report affords the Foundation the opportunity to share with you the stories and images that have touched us. In a time when we are often flooded with negative tales, we hope these stories will be a breath of fresh air and inspire each of you to embrace your ability to make a positive impact.

One of the best parts of our work is learning the stories of our donors and grant recipients: a fund established to keep the memory of a vivacious 8-year old girl gone too soon, needy parents receiving car seats they would not be able to afford otherwise, a modest-living woman becoming one of the local hospital's largest donors, the list goes on.

We share these stories and images with you in the hope they may inspire you to realize your own story's worth and turn it into a force for good.

Our assets have grown to over \$16 million, and we now manage more than 160 funds, each with its own story and its own purpose and goals. Each fund unites with the next in one overarching goal: to create a lasting impact and make our community a better place.

We hope by sharing the stories of our funds, our donors and the organizations they support, we can go above just doing good, but also grow the good in numbers, impact and spirit.

And we hope you will take up this mission. Whether you choose to make a donation, volunteer at a fundraiser or establish a fund of your own, your story has weight. By sharing it, you may inspire another to act. Together, we can grow good in our community.

Karen Niemic Buchheit
Executive Director

Wendy Brand
Board President



Capturing impact: artists share their stories



Wayne Claypatch



The arts play an important role in stimulating creativity— creativity that nurtures a vivacious community and enriches its culture. Investment in the arts through foundation grants helps create opportunities for artists and brings visual, dramatic and literary arts to life in a rural area like Cattaraugus County.

Each year the **Cattaraugus County Arts Council's** Southern Tier Biennial links local, rural artists in a professionally juried art competition—a rare opportunity for artists in Western New York. The biennial is able to open thanks to an annual grant of about \$20,000 from the **F. Donald Kenney Fund**. The winner of the competition then receives his or her own solo exhibition the following year. The 2015 biennial winner and 2016 solo exhibition artist was Wayne Claypatch, who showcased his eclectic and whimsical gallery titled “Out of the Frying Pan.”



Olean Community Theater's Mary Poppins



Olean Community Theater rehearsal



Thomasine Crawford Graf and her father, Art Filjones



Elder care workshop



Grants from CRCF also helped bring the Midtown International Theatre Festival-featured play “Inside Himself” to Olean for staged readings as part of a workshop on caring for the elderly at Total Senior Care. Written by Olean-native playwright Thomasine Crawford Graf, the play explores the effects of a stroke on the victim and the victim’s caregivers. A resource for discussion on proper care for the elderly and the challenges care can pose, the workshop brought together local caretakers and healthcare professionals and advocates for an open dialogue.



“Inside Himself” cast

Like the Cattaraugus County Arts Council, **Olean Community Theatre** established an agency fund at CRCF in 2016 to help ensure the organization’s long-term financial stability. Olean Community Theater provides opportunities for theatrical involvement to talented community members and strives to engage and build community interest in the performing arts. Providing a dependable annual funding stream, distributions from the endowment fund will help the group bring the community to the stage and bring the stage to the community through dramas, comedies and musicals.



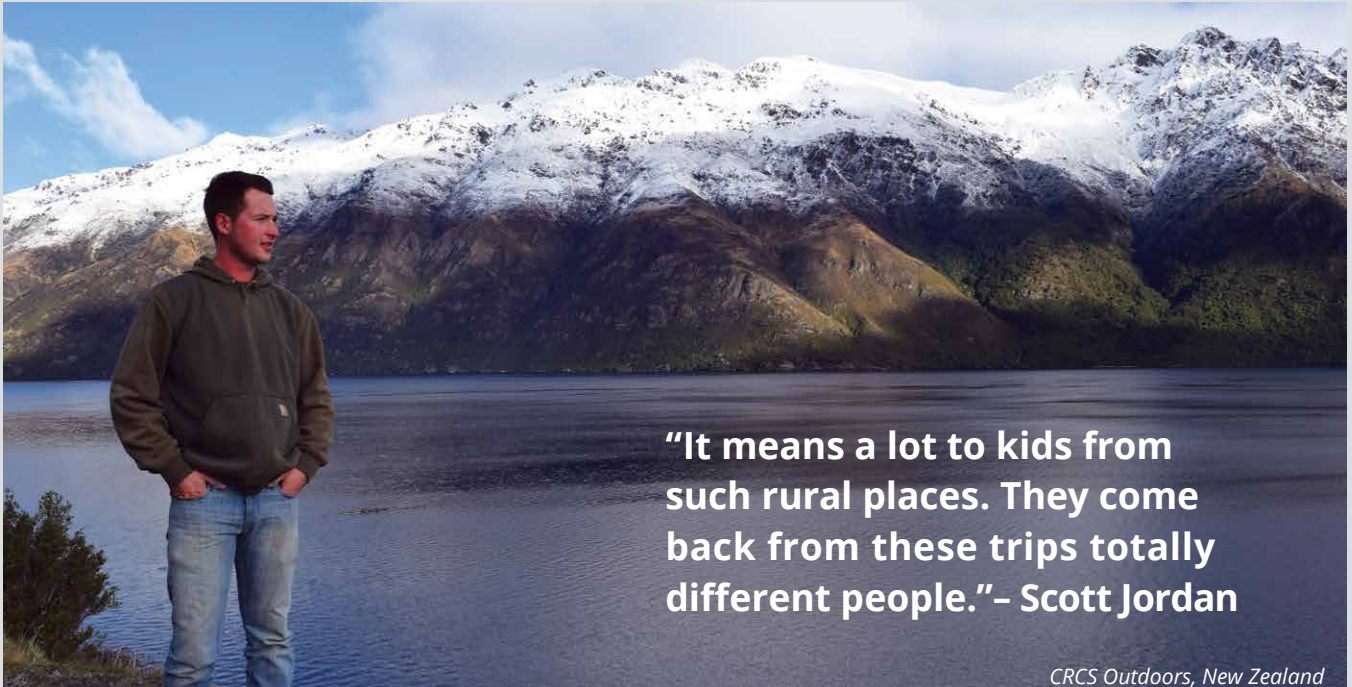
Inspired youth: tales from toddlers to teens



Donors are using CRCF funds to turn their care for the next generation into an investment in the community's future citizens and leaders. Grants supported a number of local youth organizations and programs in 2016, including a summer camp program for children and families touched by cancer and other difficulties, local high school science extracurricular endeavors and other afterschool enrichment programs.

Of particular note this year marks the 15th year of the **Kaleigh Wilday Endowment Fund's** support of local youth organizations. Every year, about six organizations receive grants on November 10—Kaleigh Wilday's birthday—from the endowment established in her memory.





“It means a lot to kids from such rural places. They come back from these trips totally different people.” – Scott Jordan

CRCS Outdoors, New Zealand



Grants to the Cuba-Rushford Central School (CRCS) Outdoors program help make dream trips across the globe affordable for area students. CRCS Outdoors instructor and founder Scott Jordan considers the trip life changing for his students. In 2016, CRCS Outdoors visited Leithen Valley in New Zealand, where the group hunted all kinds of big game.

Jordan also took Ben Stromecki, a Western New York boy facing brain cancer, on a dream hunt along with Buffalo Bills’ great Jim Kelly and Pittsburgh Steelers’ quarterback Ben Roethlisberger with the help of Wilday funds. Young Ben came home with trophies and remarkable memories.



Wilday grants to the Cuba Circulating Library helped provide kid-centered offerings, like an Earth Day program with Pfeiffer Nature Center, where kids learned about environmental dangers like pesticides and invasive species. Wilday funds also help provide special youth literacy programming, where reading is complemented by music and arts and crafts.



Lending a helping hand: stories of a caring community



When you bring a community together, great things can happen. Because of help from funds like the **Pink Pumpkin Project**, **Kids and Cancer** and **Kallie's Krusade**, area cancer patients receive peace of mind and financial support to offset medical costs, pay for transportation to treatments, and more, as well as fellowship and emotional support through special programs. Other grants supported local food pantries, community dinners and human service agencies that provide important services to individuals.

On a yearly basis more than 2,000 local residents – including 750 children – enjoy nutritious meals thanks to the **Olean Food Pantry**. A hub for the Food Bank of Western New York, the Olean pantry also distributes shipments to nine other local food pantries in Cattaraugus County. The pantry's community garden not only provides fresh vegetables, but also lets residents try their hand at gardening. Some of the support for the Olean Food Pantry's work comes from an endowed agency fund at CRCF it established in 2004 and also from annual grants from multiple funds including the **Kothari Family Fund** and the **Rose Pappas Foundation Fund**.

Meals on Wheels in Cattaraugus County, through the Cattaraugus County Department of Aging, provides over 108,000 meals to elderly with limitations in mobility or access. For many, the service is the difference between entering a nursing home and continuing independent life at home. As the status of government funding for programs like Meals on Wheels remains uncertain, their agency endowment at CRCF allows donors to support their mission of feeding seniors specifically in Cattaraugus County.





Pink Pumpkin Project

COMMUNITY FOUNDATION FUNDS

Agency Funds

Allegany Area Historical Association Fund
 Cattaraugus County Arts Council Agency Endowment Fund
 Challenger Learning Center Fund
 Council on Addiction Recovery Services, Inc. Fund
 Genesis House of Olean Fund
 Olean Business Development Corporation Fund
 Olean Community Theatre Endowment Fund
 Olean Food Pantry Fund:
 Olean Food Pantry Building Project Fund
 Olean Meditation Center Fund
 Otto-Eldred Education Foundation Fund
 Kay Pfeiffer Gerkin Endowment Fund:
 Carroll & Dolores Anstaett Pfeiffer Nature Center Fund
 Pfeiffer Nature Center Cabin Preservation Fund
 SPCA in Cattaraugus County
 United Way of Cattaraugus County Inc. Fund
 Wider Opportunities for Greater Olean, Inc. Fund

Donor Advised Funds

Laine Family Fund
 Mahar Family Foundation Fund
 Rose Pappas Foundation Fund
 Stitt Family Fund
 T-A-D-J-M Foundation Fund

Donor Designated Funds

Allegany-Limestone Schools Foundation Fund
 Allegany Public Library Memorial Association Fund
 Carroll and Dolores Anstaett Gift Tree Fund
 Carroll Anstaett Olean Little League Fund
 Samuel Costa Endowment Fund
 Maureen Curry Olean Food Pantry Community Garden Fund
 The Rev. Leo J. Gallina Endowment Fund for St. Bernard of Clairvaux Church
 Gator Fund
 Paul and Betty Hanson Fund
 Paul and Mary Janowicz Memorial Fund
 Kothari Family Endowment Fund
 Mildred Milliman Fund
 Roger S. Niemic Memorial Fund

Jim & Gail Olson Mercy Flight Fund
 Luella Potter Endowment Fund
 Doris Reisner Endowment Fund
 Lewis & Doris Reisner Endowment Fund
 Barby Ried Social Fund
 St. John's Church Endowment Fund
 St. Mary of the Angels Future Fund
 Salamanca Area Senior Center Fund
 Vergil Sutter Memorial Fund
 Kay & Oliver Williams/Rushford Endowment Fund
 Paul and Mary Lou Wood Foundation Fund
 Yehl Family Endowment Fund

Field of Interest Funds

Allegany-Cattaraugus-Chautauqua Fund for Women
 Allegany Nordic Fund
 Allegheny River Valley Trail Fund
 Beautification Fund for Olean Community
 Caneadea Dam at Rushford Lake Fund
 Cattaraugus County Law Enforcement Fund:
 CCSO K9 Fund
 Project Lifesaver Fund
 Santa Sheriff Fund
 Special Response Team Fund
 Cattaraugus County Suicide Prevention Coalition Fund
 Christmas in Allegany Fund
 Citizens Advocating Memorial Preservation (CAMP) Fund
 Continental 1 Corridor Fund
 Cuba Lake Area Young Sailors' Fund
 Dictionary Fund
 Ellicottville Great Valley Recreational Trail Fund
 First National/Manufacturers Hanover Historical Preservation Society Fund
 Paula Flint Fund for the Performing Arts
 Gus Macker - Olean City School District Fund
 Higgins Memorial Golf Tournament Fund
 Horse Resource Fund
 Jamie's Fund
 Kallie's Crusade Fund
 F. Donald Kenney Fund
 Kids and Cancer Fund
 Daniel "Tiger" Krick Junior Golf Program Fund
 Meals on Wheels of Cattaraugus County/Friends of Aging Fund

Mountain Sports Fund
 Olean City School District Foundation Fund
 Olean Parks Beautification Fund
 Olean Professional Firefighters Fireworks Funds
 Olean Rotary Club Community Improvement Fund
 Ross A. Peters Memorial Fund
 Pink Pumpkin Project Fund
 Santa Claus Lane Fund
 Southern Tier Military Support Group Fund
 STAB It Foundation Fund
 Beth Todd Memorial Fund
 Visual Arts Alliance Endowment Fund
 Kaleigh Wilday Endowment Fund
 Wing Ski Club Endowment Fund
 Woodland in the City Fund

Scholarship Funds

Laurie Anzvine Memorial Scholarship
 Albert A. Bennett Jr. Family Scholarship
 Tyler Bihler Memorial Scholarship
 Burt Scholarship
 May C. Carroll Scholarship
 Chautauqua Cattaraugus Board of Realtors Scholarship
 Thomas W. Conklin Sr. Scholarship
 Maureen Curry Inspiration Scholarship
 Fred G. Grace Memorial Scholarship
 Hamburg Track Scholarship
 Paul and Betty Hanson Career/Technical Scholarship
 Alyn J. Heim Music Scholarship
 Patricia "Ann" Heister English/Journalism Memorial Scholarship
 Joseph and Cecily Higgins Scholarship
 Drs. Ahmad and Naheed Hilal Family Scholarship
 Mohammad and Sakeena Iqbal Health Care Award
 Hinsdale Alumni Association Memorial Scholarship
 Anthony Iacovino American History Scholarship
 Paul and Mary Janowicz Memorial Scholarship

Signe, Svenborg, Agnes and Selma Johnson Scholarship
 Signe H. Johnson Scholarship
 Wayne Krieger Memorial Scholarship
 Kothari Family Fund Health Care Scholarship
 Louis A. "Louie" Magnano Scholarship
 Maryetta's Mission Scholarship
 Daniel McCarthy Scholarship
 Bob and Barbara McCord Scholarship
 Pat McGee Nursing Scholarship
 John J. Murphy Family Scholarship
 OHS Class of 1961 Scholarship
 Olean City School District Scholarship Fund:
 Jack and Muriel Fogarty Memorial Scholarship
 Russell F. Greenawalt & Elizabeth Page Greenawalt Scholarship
 Mary Elizabeth Smith Scholarship
 Thomas & Robert Smythe Scholarship
 Otto-Eldred Alumni Scholarship
 Michele Krahe Peace O.H.S. Scholarship
 Nicolas G. Pendl Memorial Scholarship
 Eric Peters Memorial Scholarship
 Portville College Scholarships
 Mark J. Prockton Memorial Scholarship
 Ratana Ratanawongsa Scholarship
 Ben & Rose Schwabenbauer Educational Scholarship
 Southern Tier Military Support Group Scholarship
 Gregory D. Spring Perseverance Scholarship
 Elodine Swarts Baxter and Lena Conrad Swarts Memorial Scholarship
 Jonathan Teuscher Scholarship
 JoAnn Wehmeyer English Scholarship
 Paul and Mary Lou Wood Swim Scholarship
 Dr. Donald A. Wormer Family Scholarship

Unrestricted Funds

Anonymous II Fund
 Community Fund



Give to any fund at cattfoundation.org/give. CRCF also accepts gifts by cash, check and charge, as well as gifts of stock, planned gifts and IRA distributions.



Olean Meditation Center



Jim & Gail Olson Mercy Flight



Santa Claus Lane



CARING HEARTS FOR A HEALTHIER COMMUNITY

Every day community members face life-threatening illnesses or chronic health conditions. Grants from a number of funds at the community foundation make a difference in improving access to medical care, lending a hand to those facing costly medical bills and supporting programs that will improve the health of our friends and neighbors.

The Olean General Hospital Foundation receives annual distributions from multiple CRCF funds, with the largest support coming from the **Mildred Milliman Fund**. Ms. Milliman established an endowment with a \$6 million gift that helps provide perpetual funding to more than 30 other nonprofit organizations locally and nationally. Gifts to the OGH Foundation have supported the state-of-the-art Mildred Milliman Outpatient Surgery Center and other purposes at the hospital.

A **Kids and Cancer Fund** grant in 2016 helped purchase of a new Linear Accelerator that offers improved treatment and faster recovery for patients at the Mildred Milliman Radiation Medicine Center, a premiere affiliate site of Roswell Park Cancer Institute. This allows patients local treatment options so they do not have to travel to other locations.

When local care is not available – there are two funds, the **Jim and Gail Olson Mercy Flight Fund** and the **Paul and Betty Hanson Fund**, that support Mercy Flight WNY to get patients to specialized care outside of the area quickly and safely.

GRANTS

Allegheny Area Historical Association Fund	
Allegheny Area Historical Association	\$7,000
Allegheny-Limestone Schools Foundation Fund	
New York City trip for students	\$4,851
Memory books for students	\$129
Allegheny River Valley Trail Fund	
Crاندall's Memorials for trail marker	\$90
Carroll and Dolores Anstaett Gift Tree Fund	
Gift certificates for Gift Tree families	\$1,280
Interfaith Caregivers Inc.	\$301
Carroll Anstaett Olean Little League Fund	
Olean Little League	\$5,609
Cattaraugus County Arts Council Agency Endowment Fund	
Cattaraugus County Arts Council	\$364
Cattaraugus County Suicide Prevention Coalition Fund	
Suicide Prevention Coalition	\$246
Preventive education marketing	\$1,250
Christmas in Allegany	
Character costume for holiday visits	\$40
Community Fund	
Ardent Solutions - safe carseats program	\$1,200
Blount Library - author program	\$1,400
Cattaraugus County Health Department - Veggie Mobile	\$2,000
Kevin Guest House - building expansion	\$2,500
Lutheran Social Services Foster Grandparent Program	\$500
Continental 1 Corridor Fund	
Continental 1	\$33,500
Samuel Costa Endowment Fund	
Hamlin Memorial Library	\$836
St. Elizabeth of Hungary Church	\$1,671
St. Raphael's Roman Catholic Church	\$836
Cuba Lake Area Young Sailors' Fund	
Building to house sailboats	\$3,936
Dictionary Fund	
Olean Rotary Club for dictionary program	\$600
Ellicottville Great Valley Recreational Trail Fund	
Trail brochures	\$315
Paula Flint Fund for the Performing Arts	
"Inside Himself" play production	\$500
The Rev. Leo J. Gallina Endowment Fund for St. Bernard of Clairvaux Church	
St. Bernard of Clairvaux Church	\$608
Gus Macker - Olean City School District Foundation	
2016 Gus Macker Tournament	\$33,806
Olean City School District Foundation Fund	\$3,442
Olean High School Sports Booster	\$4,683
Higgins Memorial Golf Tournament Fund	
Biggies Bullies	\$500
Genesis House of Olean, Inc.	\$300
HomeCare & Hospice	\$350
Joyful Rescues	\$500



(Higgins cont'd)

Olean City School District Foundation Fund	\$100
Olean General Hospital Foundation	\$1,500
SPCA in Cattaraugus County	\$500
The ReHAbilitation Foundation	\$350
United Way of Cattaraugus County	\$3,000

Paul and Mary Janowicz Memorial Fund

Great Valley Volunteer Fire Department	\$150
Olean General Hospital Foundation	\$150
Olean Public Library	\$150

Kallie's Krusade Fund

Assistance to youth cancer patient families	\$7,004
---	---------

F. Donald Kenney Fund

Cattaraugus County Arts Council for Southern Tier Biennial	\$21,000
--	----------

Kids and Cancer Fund

Assistance to families for medical costs	\$19,250
Big Brother Big Sister Program	\$200
Bradford Hospital Foundation	\$8,200
Children's Hospital of Pittsburgh of UPMC Foundation	\$3,000
CURE Childhood Cancer Association	\$1,000
Kevin Guest House	\$500
LEEK Hunting and Mountain Preserve	\$500
Olean General Hospital Foundation	\$1,620
Ronald McDonald House	\$500
Roswell Park Alliance Foundation	\$2,000
Shriners Hospital for Children	\$2,000
St. Bernard of Clairvaux Church	\$500
St. Jude Children's Research Hospital	\$2,000
Wings Flights of Hope, Inc.	\$1,000
Women's & Children's Hospital of Buffalo Foundation	\$2,000

Kothari Family Endowment Fund

Olean Food Pantry	\$250
Olean General Hospital Foundation	\$1,000

Daniel "Tiger" Krick Junior Golf Program Fund

Bartlett Country Club Summer Golf Scholarship for Derek Douthit	\$416
---	-------

Mahar Family Fund

Interfaith Caregivers Inc.	\$150
Literacy Volunteers of Cattaraugus County	\$100
Mercy Flight Inc.	\$200
Olean First Baptist Church	\$150
Olean First Baptist Church	\$100
Pfeiffer Nature Center	\$100
St. Mary of the Angels Church	\$100
St. Vincent DePaul Society, St. John's Church	\$100
Wider Opportunities for Greater Olean, Inc.	\$150

Mildred Milliman Fund

Alzheimers Association	\$805
American Cancer Society	\$870
American Foundation for the Blind	\$805
American Heart Association	\$870
American Kidney Fund	\$870
American Lung Association in New York	\$870
American Red Cross	\$870
American SPCA	\$1,306
Best Friends Animal Society	\$1,306
Blinded Veterans Association	\$1,023
Camp Good Days & Special Times	\$2,046
Cattaraugus Region Community Foundation	\$3,308
Cystic Fibrosis Foundation	\$805
Easter Seals	\$805
Guiding Eyes for the Blind	\$1,023
Humane Society of U.S.	\$1,306
International Fund for Animal Welfare	\$1,306
Leukemia & Lymphoma Society	\$805
March of Dimes, WNY Division	\$870
Muscular Dystrophy Association, Western New York	\$870



GUIDE FOR A SAFE RIDE

More babies and young children are riding safer thanks to support for the Child Passenger Safety Seat Program from a **Community Fund** grant. The program provides education and training from certified car seat technicians, as well as free car seats for families who meet income requirements. Proper child restraints reduce traffic incident deaths by 71 percent for infants and by 54 percent for toddlers. The \$1,200 grant helped expand the program into Cattaraugus County after it distributed 150 car seats and inspected over 250 more for needy families in Allegany County.

(Milliman cont'd)

National Anti-Vivisection Society	\$1,306
National Epilepsy Foundation	\$805
National MS Society	\$870
National Wildlife Federation	\$1,306
Olean General Hospital Foundation	\$175,612
Paralyzed Veterans of America	\$870
Roswell Park Alliance Foundation	\$2,046
Salvation Army	\$870
SPCA in Cattaraugus County	\$4,941
SPCA serving Allegany County	\$1,458
St. Jude Children's Research Hospital	\$2,046
Town of Olean Fire Department	\$718
United Spinal Association	\$718
World Wildlife Fund	\$1,306

Mountain Sports Fund

USSA membership fees for skiers Ashley Lodmell & Megan McJames	\$560
--	-------

Olean City School District Foundation Fund

Student trip to Galapagos Islands	\$18,750
Instrument for OIMS Music Department	\$750
NASP archery equipment	\$1,396
OCSD Summer STAR Program	\$3,896
OHS Alumni Association	\$330
OHS Marathon to the Sky Project	\$492
OHS Sports Boosters	\$100
OIMS Book Club	\$1,500

Olean Meditation Center Fund

Olean Meditation Center	\$2,253
-------------------------	---------

Olean Parks Beautification Fund

Oak Hill Park maintenance	\$1,606
---------------------------	---------

Olean Professional Firefighters Fireworks Fund

Community fireworks display	\$18,000
-----------------------------	----------

Jim & Gail Olson Mercy Flight Fund

Mercy Flight Inc., Olean hangar	\$769
---------------------------------	-------

Otto-Eldred Education Foundation Fund

Otto-Eldred Education Foundation	\$3,345
----------------------------------	---------

Rose Pappas Foundation Fund

Assistance to individuals for medical expenses	\$402
Comfort House of Allegany County	\$200
Hinsdale Food Pantry	\$300
Hinsdale United Methodist Church community Easter dinner	\$180
HomeCare & Hospice	\$200
Interfaith Caregivers Inc.	\$200
Loaves & Fishes	\$100
Olean First Baptist Church community Easter dinner	\$200
Olean Food Pantry	\$200
Olean General Hospital Foundation	\$450
Olean Senior Center	\$300
Oswayo Valley School District	\$197
Portville Food Pantry	\$200
Rebuilding Together Olean Area Inc.	\$200
St. Mary of the Angels Basilica community Christmas dinner	\$200
St. Michael's Home	\$200
St. Stephen's Episcopal Church community Thanksgiving dinner	\$200
The ReHABILitation Foundation	\$100

Ross A. Peters Memorial Fund

U C of Ellicottville Food Pantry	\$3,000
----------------------------------	---------

Pfeiffer Nature Center Cabin Preservation Fund

Pfeiffer Nature Center	\$7,675
------------------------	---------

Pink Pumpkin Project Fund

Aid to cancer patients	\$34,467
Olean Meditation Center support group program	\$1,000
Sisterhood Wellness Center memberships	\$300



VEGGIE TALES: HOPE FOR A HEALTHIER FUTURE

The Veggie Mobile initiative helped set families on a healthier course in 2016 with the delivery of farm-fresh vegetables to residents of subsidized housing in Olean. Volunteers, like "Carrot Lady" Bev Bennett, demonstrated how to make healthy meals and snacks from fresh vegetables and offered a cooking class for residents.

More than 60 percent of residents who received Veggie Mobile help reported weight loss and began to incorporate fresh vegetables into their regular meal habits. One woman lost 70 pounds after beginning dramatic dietary change with the Veggie Mobile's help. With the help of a \$2,000 **Community Fund** grant, the program promoted a healthier lifestyle for disadvantaged families in Olean.

Luella Potter Endowment Fund

Southern Tier Catholic School System & Archbishop Walsh Academy \$1,999

Doris Reisner Endowment Fund

American Cancer Society \$1,104
 American Diabetes Association \$368
 American Friends Service Committee \$368
 Empire State Association for the Deaf \$736
 Genesis House of Olean, Inc. \$736
 HomeCare & Hospice \$736
 Interfaith Caregivers Inc. \$736
 SPCA in Cattaraugus County \$368
 St. Stephen's Episcopal Church \$1,104
 The ReHAbilitation Foundation \$1,104

Lewis & Doris Reisner Endowment Fund

Olean General Hospital Foundation \$8,845

Revitalizing Olean Fund

Olean Parks Beautification Fund \$1,416
 Santa Claus Lane Fund \$5,000

Salamanca Area Senior Center Fund

Ganoung's Fire Protection, Inc. for fire protection system at center \$1,900

Santa Claus Lane Fund

Lights and equipment for Santa Claus Lane \$54,768

Santa Sheriff Fund

GOACC gift certificates for needy families \$7,500

Southern Tier Military Support Group Fund

Supplies and postage for care packages to troops \$5,117

Vergil Sutter Memorial Fund

St. Bonaventure University men's basketball program \$1,129
 St. Jude Children's Research Hospital \$1,129

Beth Todd Memorial Fund

Cancer Services Program of Allegany & Cattaraugus Counties \$576

Visual Arts Alliance Endowment Fund

"Inside Himself" play production \$500

Kaleigh Wilday Endowment Fund

Cuba Circulating Library \$1,000
 Cuba Rushford PTA \$1,000
 Cuba-Rushford Central School Alaska Trip Fund \$1,000
 Dresser-Rand Challenger Learning Center \$1,000
 Cuba Lake Area Young Sailors' Fund \$500
 YMCA of the Twin Tiers \$1,000

Kay & Oliver Williams/Rushford Endowment Fund

Cuba Scout Pack 708 \$698
 Cuba-Rushford Central School Outdoors \$698
 First Baptist Church \$1,033
 Podonque Cemetery \$698
 Rushford Cemetery Association \$698
 Rushford Concert Band \$698
 Rushford Free Library \$1,033
 Rushford United Methodist Church \$1,033

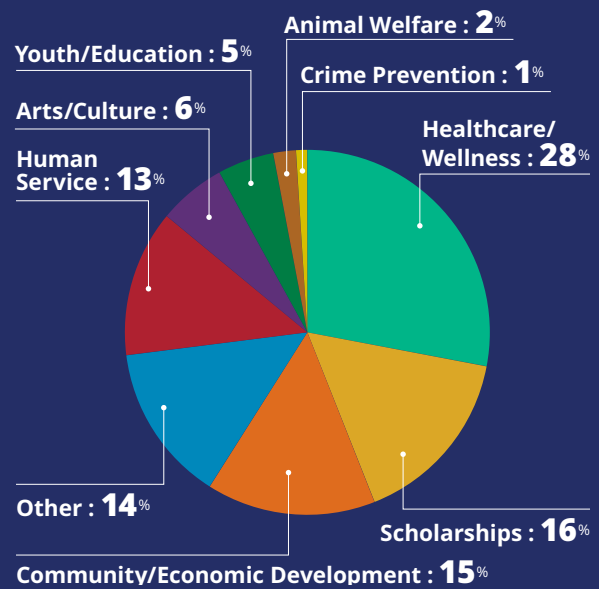
Woodland in the City Fund

Lady Justice Squirrel repairs \$1,930

Yehl Family Endowment

Samaritan's Purse \$573
 World Vision Inc. \$573

Grants by program category





HAPPY ENDINGS FOR OUR FURRY FRIENDS

Mistreated and abandoned animals in our area are one step closer to their forever home thanks to Foundation support for the SPCA in Cattaraugus County. The SPCA received nearly \$6,000 in grants from funds at CRCF in 2016. The agency received \$4,941 from the **Mildred Milliman Fund**, which has made annual grants to the SPCA since 2004. The SPCA also received \$375 from the **Doris Reisner Fund** and \$500 from the **Higgins Memorial Golf Tournament Fund**. These grants are used to offset operation costs and help care for the animals.



SHARE YOUR STORY, ESTABLISH A FUND

Whether you want to carry on a loved one's legacy with a scholarship for local students or create perpetual support for your favorite charities, we can help you design a fund that both brings your story to life and impacts our community.

Tell us your story – what impact you want to make. We will do the paperwork and handle the details for you.

All donations to a community foundation fund are tax-deductible to the fullest extent allowed by law. The Foundation provides gift receipts and all other necessary tax documentation.

The Foundation handles all administrative duties including annual audits and 990 tax returns to ensure IRS compliance. Administrative costs are shared among all funds. Your fund also will reap the rewards of the Foundation's diverse investment portfolio and comprehensive management program.

Contact us at 716-301-CRCF (2723) or email us at foundation@cattfoundation.org. CRCF accepts gifts by cash, check and credit card, as well as gifts of stock, IRA rollovers, bequests and planned gifts.

Legacy Society Planned Giving

The Foundation's Legacy Society recognizes donors who have made or plan to make a gift through an estate plan or another planned-giving strategy like a life income gift, life insurance policy or retirement plan. Donors and attorneys are encouraged to contact the Foundation to discuss planned giving options.

Donors, Memorials and Tributes

For an online list of 2016 donors, memorials, tributes and Legacy Society members, visit <https://goo.gl/iPp4ig>.

SCHOLARSHIPS

Tyler Bihler Memorial Scholarship

Kylea Andreano \$1,000
Jacob Cavana \$1,000

Burt Scholarship

Morgan Carapellatti \$1,000
Katelyn Powless \$1,000
Zachary Ryan \$1,000
McKenzie Skroback \$1,000

May C. Carroll Scholarship

Dylan Rhinehart \$1,450

Jack & Muriel Fogarty Memorial Scholarship

Alexa Minard \$1,000
Monica Moses \$1,000
Miranda Sakala \$500

Fred G. Grace Memorial Scholarship

Tyler Hines \$500
Michelle Miller \$500
Rajiv Thandla \$500

Alyn J. Heim Music Scholarship

Jenna Kellogg \$1,000

Joseph & Cecily Higgins Scholarship

Allison Forness \$2,500
Timothy McMullen \$2,500

Hinsdale Alumni Association Memorial Scholarship

Ryanne Cousins \$1,000

Anthony Iacovino American History Scholarship

Nicholas Sanders \$1,000

Mohammad & Sakeena Iqbal Healthcare/Education Award

Zane Porterfield \$500



Allison Forness

Former Allegany-Limestone Central School basketball standout and Joseph and Cecily Higgins Scholarship recipient Allison Forness suited up at the University of Rochester. Allison took to the court



19 times for the Yellow Jackets in her freshman season. She is also a standout in the classroom where she earned a 4.0 while majoring in chemical engineering.



2016 scholarship recipients

Paul & Mary Janowicz Memorial Scholarship

Kaleigh Hunt	\$500
Max Paddock	\$500

Signe, Svenborg, Agnes & Selma Johnson Scholarship

Jacob Cavana	\$500
Lyndsey Churakos	\$300
Olivia MacWilliams	\$500
Shane Pancio	\$500
Miranda Sakala	\$500

Signe H. Johnson Scholarship

McKenzie Skroback	\$1,000
-------------------	---------

Kothari Family Fund Healthcare Scholarship

Ethan Wentworth	\$500
Ryan Woodring	\$500

Wayne Krieger Memorial Scholarship

Darcy Brownell	\$750
Anthony Ozzella	\$750
Jasmine Valentine	\$750

Daniel McCarthy Scholarship

Lyndsey Churakos	\$475
Krista Cousins	\$1,500
Sofia Moore	\$1,500

Pat McGee Nursing Scholarship

Shannia Ball	\$500
Caroline Kaffka	\$500
Zachary Sortore	\$500

CRCF Merit Scholarship

Madeline Fodor	\$1,000
----------------	---------

John J. Murphy Family Scholarship

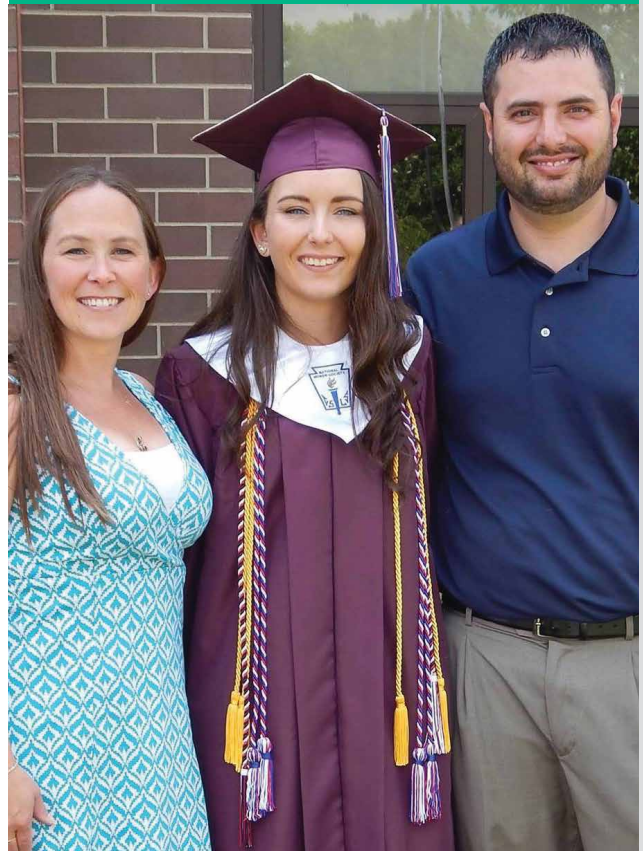
Francesca Bartimole	\$2,500
Corie Both	\$2,500
Geoffrey Broadbent	\$2,500
Kyle Brown	\$2,500
Mikeena Downen	\$2,500
Christopher Lashway	\$2,500
Timothy McMullen	\$2,500
Curt Monkhouse	\$2,500
Monica Moses	\$2,500
Lindsay Rinfrette	\$2,500
Haley Ruffner	\$2,500
James Scanlan	\$2,500
Jeffrey Seamon	\$2,500
Megan Shumway	\$2,500
David Sklener	\$2,500
Darienne Slocum	\$2,500
Taylor Smith	\$2,500
Kyle Stover	\$2,500
Rajiv Thandla	\$2,500
Katelyn Woods	\$2,500

OHS Class of 1961 Scholarship Fund

Bridget Havens	\$1,500
Nicholas Jodush	\$1,500

Adalia Bilotta

Adalia Bilotta, 2016 Kaleigh Wilday Scholar-Athlete Award recipient and Cuba-Rushford Central School graduate, kicked off her Kent State journey studying biology/pre-med and taking part in the university's honors program.



Otto/Otto-Eldred Alumni Scholarship

Mychaela Jones \$1,000

Michele Krahe Peace OHS Scholarship

Evan Threehouse \$500

Nicolas G. Pendl Memorial Scholarship

William Seip \$500

Stephanie Wohlers \$500

Eric Peters Memorial Scholarship

Natalie Booth \$1,000

Portville College Scholarships

Mariah Bloise \$400

Gavin Colligan \$100

Emily Hall \$400

Seanna Jobe \$250

Lydia Lukomski \$600

Grant Milne \$400

Marissa Seib \$800

Siarra Shaw \$400

Darienne Slocum \$400

Robert Wheeler \$400

Mark J. Prockton Memorial Scholarship

Aaron Wojnicki \$500

Ratana Ratanawongsa Scholarship

Sean Conroy \$670

Ben & Rose Schwabenbauer Educational Scholarship

Olivia MacWilliams \$500

Nathan Smith \$500

Mary Elizabeth Smith Scholarship

Mallory Bliss \$700

Miranda Sakala \$700

Thomas & Robert Smythe Scholarship

Megan Shumway \$2,500

Southern Tier Military Support Group Scholarship

Michael Lyons \$500

Gregory D. Spring Perseverance Scholarship

Shannia Ball \$500

Jordan Collins \$500

Daniel Macomber \$500

Jillian Marcellin \$500

Robert Wheeler \$1,000

Stitt Family Fund

total \$10,000

Trevor Colley --

Courtney Meyers --

Paige Payne --

Neil Shoemaker --

Christina Slocum --

Jordan T. Urbanski --

**Rajiv Thandla**

2016 John J. Murphy Scholarship recipient Rajiv Thandla enjoyed his first year at NYU's Stern School of Business where he is studying computing and data science. Rajiv performed with an on-campus a capella group – and even got to spend a few minutes chatting with NYU President, Dr. Andrew Hamilton.





Mallory Bliss

Mallory Bliss, a 2016 Mary-Elizabeth Smith Scholarship recipient and Olean High School graduate, moved to a warmer climate when she began classes at Rollins College in Winter Park, FL. Mallory is still creating and displaying her art like she did in high school, and is already serving as a biology tutor for her peers.



Jonathan Teuscher Scholarship

Kylea Andreano	\$625
Chelsea Beemer	\$625
Taylor Buffington	\$625
Katherine Fox	\$625
Ethan Kelley	\$625
Rachel Matteson	\$625
Hali Peer	\$625
Kiya Porter	\$625
Haley Porterfield	\$625
Enhui Przbyla	\$625
Nicole Raymond	\$625
Kylie Schuman	\$625

JoAnn Wehmeyer English Scholarship

Miranda Sakala	\$1,000
----------------	---------

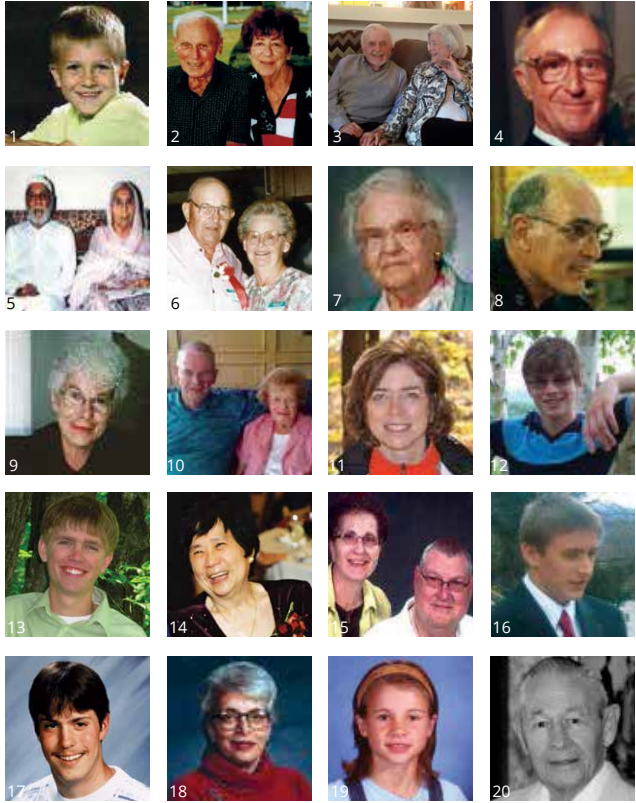
Kaleigh Wilday Endowment Fund

Adalia Bilotta (scholar athlete)	\$1,000
Shelby Card (JCC)	\$1,000

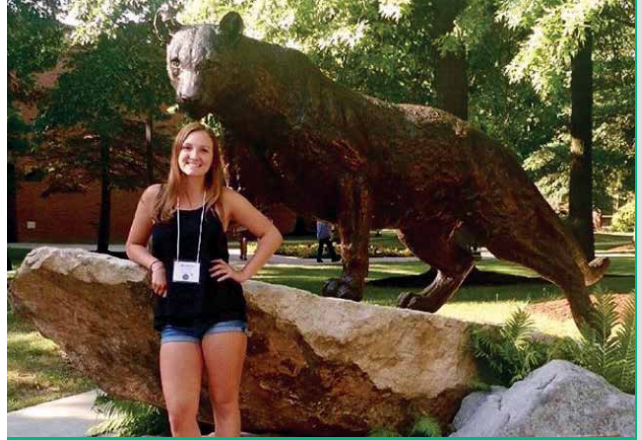
Dr. Donald A. Wormer Family Scholarship

Mariah Bloise	\$1,500
Taylor Lee	\$500
Darienne Slocum	\$1,500





1. Tyler Bihler	6. Paul & Mary Janowicz	11. Michele Krahe Peace	16. Gregory D. Spring
2. Fred G. Grace	7. Signe H. Johnson	12. Nicolas G. Pendl	17. Jonathan Teuscher
3. Alyn J. Heim	8. Wayne Krieger	13. Eric Peters	18. JaAnn Wehmeyer
4. Anthony Iacovino	9. Pat McGee	14. Dr. Ratana Ratanawongsa	19. Kaleigh Wilday
5. Mohammad & Sakeena Iqbal	10. John J. Murphy	15. Ben & Rose Schwabenbauer	20. Dr. Donald Wormer



Stephanie Wohlers

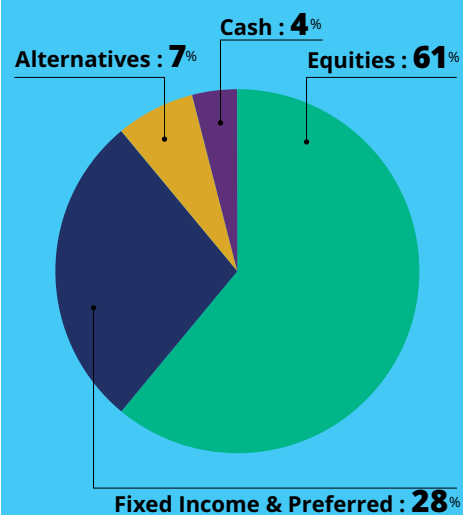
Allegany-Limestone Central School's Stephanie Wohlers poses with the Pitt Panther on the University of Pittsburgh at Bradford's campus, where she is studying environmental science. Stephanie received one of two 2016 Nicolas G. Pendl Memorial Scholarships. Pitt pride on full display, she and her friends made the trip to Pittsburgh for the Pitt v. Penn State rivalry game this year.



STATEMENTS OF FINANCIAL POSITION

Years ended December 31,	2016	2015
Assets		
Current:		
Cash and cash equivalents	\$ 668,956	\$ 1,618,956
Current portion of pledges receivable	73,334	5,000
Prepaid expense	8,546	9,353
Total current assets	750,836	1,633,309
Investments	15,349,406	13,526,375
Pledges receivable less current portion	58,333	--
Property and equipment	2,894	--
	\$ 16,161,469	\$ 15,159,684
Liabilities and Net Assets		
Current Liabilities		
Accounts payable	\$ 10,262	\$ 16,738
Funds held for Agencies	643,155	511,442
Total liabilities	653,417	528,180
Unrestricted net assets		
Endowment	12,633,270	12,113,008
Non-Endowed	1,844,488	1,534,955
Operations/administration	1,030,294	983,541
Total net assets	15,508,052	14,631,504
	\$ 16,161,469	\$ 15,159,684

Asset Allocation



STATEMENTS OF ACTIVITIES

Support and Revenue		
Gifts and donations	\$ 1,057,925	\$ 1,058,000
Unrealized losses	(112,166)	(933,497)
Gains on sale of securities	849,012	17,508
Administrative fees	8,061	6,631
Interest and dividends	210,240	736,533
Total support and revenue	2,013,072	885,175
Expenses		
Grants to others and other expenses	846,351	824,750
Management and general	244,664	192,355
Total expenses	1,091,015	1,017,105
Change in net assets	922,057	(131,930)
Net assets, at beginning of year	14,631,504	14,763,434
Transfer of fund from endowment to agency	(45,509)	--
Net assets, at end of year	\$ 15,508,052	\$ 14,631,504

Foundation Staff



Karen Niemic Buchheit
Executive Director



Ryan Michelle Wilcox
Manager of Donor Services



Michelle Joyce
Staff Accountant



Kirk Windus
Communications & Fund
Development Coordinator



Board of Directors



Wendy Brand
President, New York State
Assemblyman Joe Giglio



Dr. Yogini Kothari
Vice President,
Orthodontist, retired



Steve Foster
Second Vice President,
Olean Area Federal Credit Union



Doug Price
Secretary,
Hunter Agency



Mike Kasperski
Treasurer,
St. Bonaventure University



Lucy Benson
Potter Lumber Company



Vicki Blessing
Park Centre Development



Ted Branch
Iroquois Group



R. Dennis Casey
Casey, Halwig and Hartle
Funeral Home



Dr. Anthony Evans
Cattaraugus County
Youth Bureau



Mary Freeman
FreemanKelley Inc.



Michael Higgins
Airgas



Sharon Myers
Cutco Corporation



Tim O'Keefe
Cutco Corporation



Dennis Pezzimenti
Howard Hanna Professionals



Theresa Raftis
Community Bank, N.A.



Jeffrey Reisner
Reisner Law Group



Carol Stitt
Cattaraugus Region
Community Foundation, retired



Dan Strauch
Olean Medical Group

Committees

Executive – Wendy Brand, Steve Foster, Mike Kasperski, Dr. Yogini Kothari, Doug Price and Carol Stitt

Allocations – Lucy Benson, Wendy Brand, Mary Freeman, Mike Higgins, Dr. Yogini Kothari and Theresa Raftis

Board Development – Vicki Blessing, Wendy Brand, Dr. Anthony Evans, Rose Proto and James Stitt Jr.

Finance – Wendy Brand, Steve Foster, Mike Kasperski, Doug Price and Carol Stitt

Investment – Steve Foster, Dr. Naheed Hilal, Mike Kasperski, Jim Mahar, Dennis Pezzimenti, Theresa Raftis & Carol Stitt

Marketing – Vicki Blessing, Ted Branch, Sharon Myers, Beth Palumbo, Doug Price, Jeff Reisner, John Sheehan, Audra Stevens, Dan Strauch and Skip Wilday

Scholarship – Lori Anastasia, Dennis Casey, Dr. Anthony Evans, Liselle Esposito, Mary Freeman, Dr. Naheed Hilal, Dr. Yogini Kothari, Tim O'Keefe, Brian Palumbo, Betty Pappas, Theresa Raftis, Bob Simon & Dr. Colleen Taggerty

Technology – Ted Branch, Mike Higgins, Adam Jester and Dave Potter



CATTARAUGUS REGION
COMMUNITY FOUNDATION

GROWINGGOOD.

301 North Union Street, Suite 203
Olean, New York 14760


Address Service Requested


Non-Profit Org.
U.S. Postage
PAID
Randolph, NY
Permit No. 31



716-301-CRCF (2723)
cattfoundation.org

 facebook.com/cattfoundation

 @CattFoundation

 linkedin.com/company/cattaraugus-region-community-foundation